

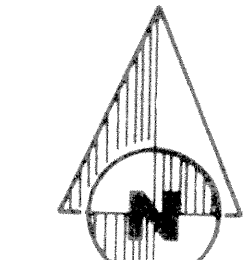
FOX TRAIL

IN SECTIONS 26, 35, AND 36,
TOWNSHIP 43 SOUTH, RANGE 40 EAST
PALM BEACH COUNTY, FLORIDA

JULY 1975

CONRAD W. SCHAEFER CONSULTING ENGINEERS, INC.
PALM BEACH COUNTY, FLORIDA

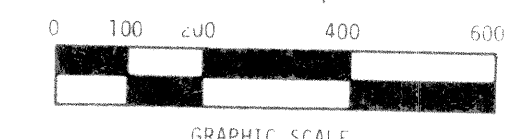
THIS INSTRUMENT WAS PREPARED BY ROBERT J. WHIDDEN OF DAILEY-FOTORNY, INC., LAND PLANNERS,
SURVEYORS AND ENGINEERS, 1028 SOUTH MILITARY TRAIL, WEST PALM BEACH, FLORIDA, PHONE 965-8787.



STATE OF FLORIDA
COUNTY OF PALM BEACH

THIS PLAT WAS FILED FOR RECORD
AT _____ M. THIS _____ DAY OF _____
19____ AND DULY
RECORDED IN PLAT BOOK NO. _____
PAGE _____

JOHN B. DUNKLE, CLERK
CIRCUIT COURT



1" = 200'

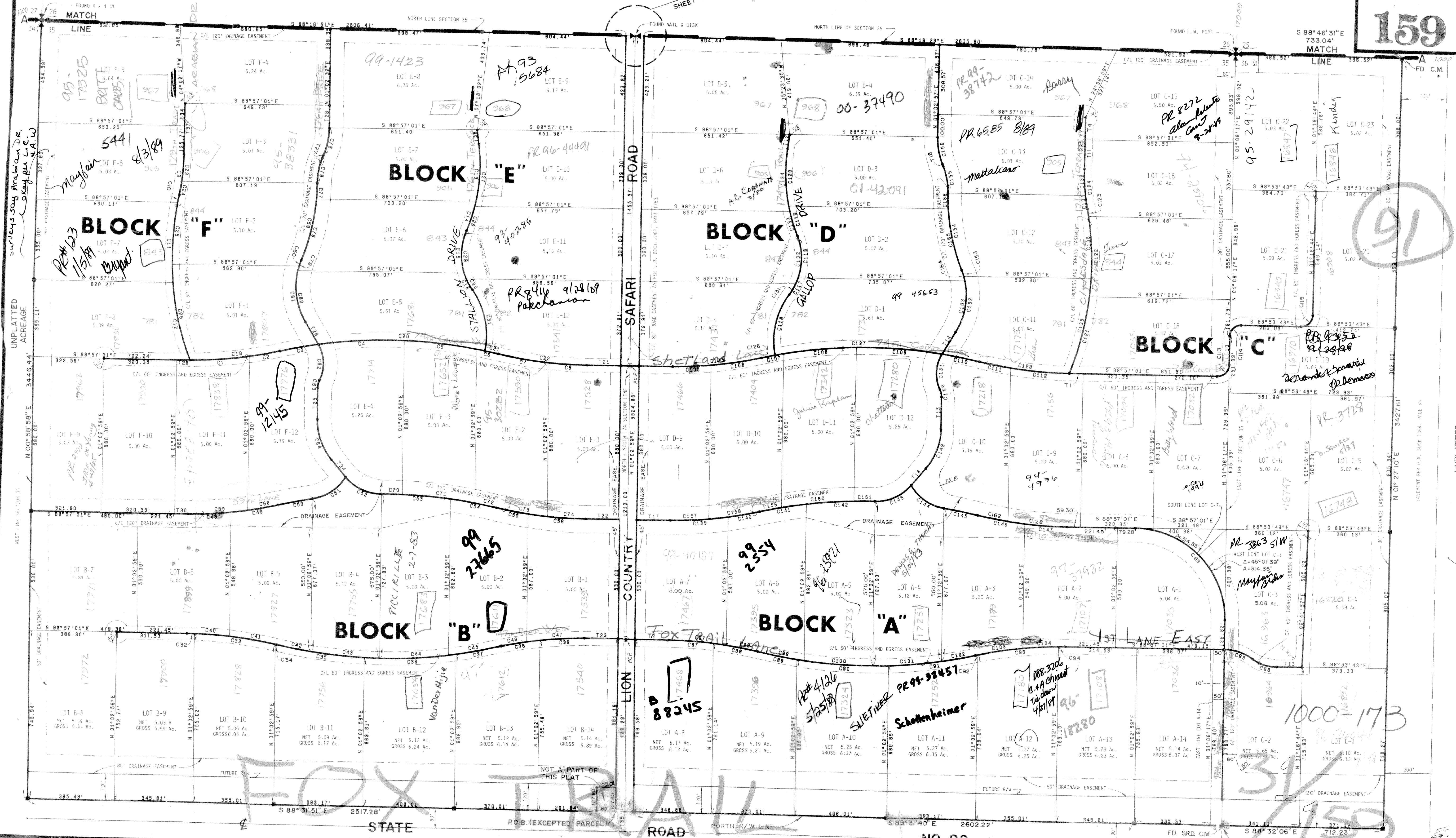
NOTE: ALL LOTS SHOWN ARE IN EXCESS OF 217,800 SQUARE
FEET OR 5.00001 ACRES.

NOTE: FOR CURVE DATA TABLES, (C NO.S) AND DISTANCE OR TANGENT TABLES,
(T NO.S), SEE SHEET 6 OF 6 AND CONSULT THE APPROPRIATE LISTING
BY SHEET NUMBER.

FOR MATCH SEE SHEET 5 OF 6

FOR MATCH SEE SHEET 4 OF 6

159



42-140
Surveyors say American de
Lacey per L.C. W.

91

1000-173

FOX TRAIL

STATE ROAD NO. 80

UNPLATTED
ACREAGE